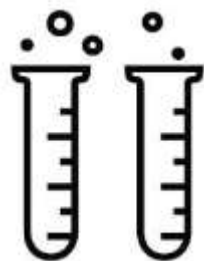
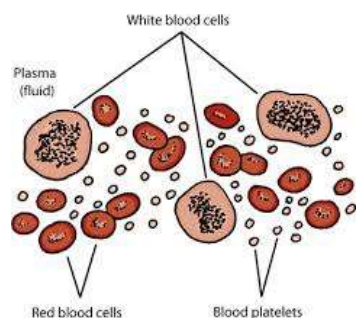


Hereditary Cancer Syndrome

Genetic test and how does it work?



Sequence enrichment of target regions



MRC-Holland
MLPA®

Harvest DNA from WBCs

Concurrent NGS sequencing of selected genes to detect SNPs/SNVs & Indels

Concurrent Large gene duplication and deletion detection by aCGH or MLPA

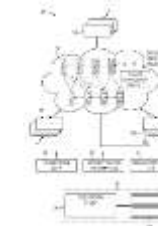


Informative user friendly, actionable report following ACMG guidelines

Followed by post test counselling



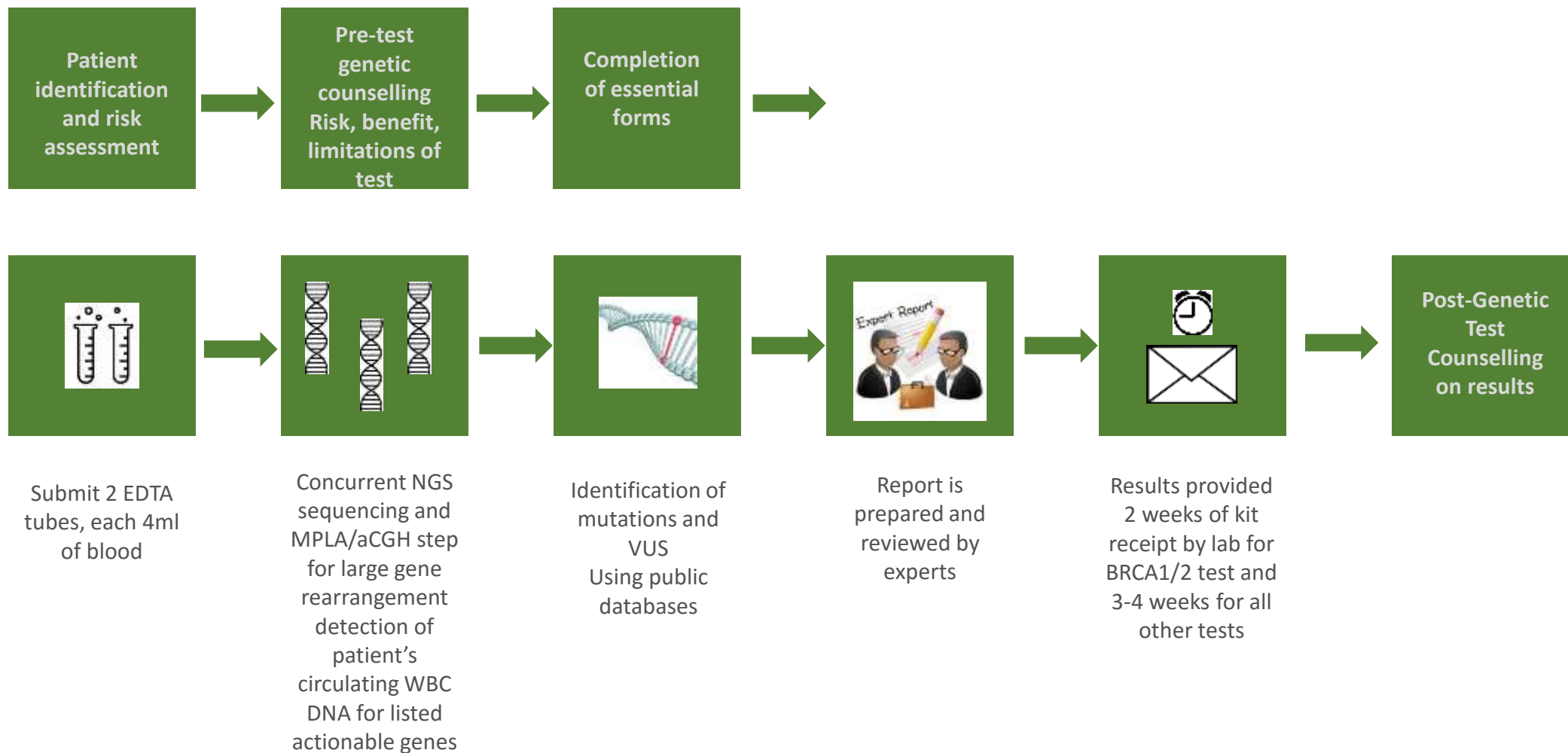
Genomic changes analysed by experts based on current scientific knowledge



Data analysis by Bio-informatics

Hereditary Cancer Syndrome

Recap *Genetic Test Process flowchart*



Other Practicalities

Hereditary Cancer Syndrome

Forms

- **Test Requisition Form** [completed, signed and dated by healthcare professional]
- **Informed Consent Form** [completed, signed and dated by patient, impartial witness, healthcare professional]
- **Patient Family History Questionnaire** [completed, signed and dated by healthcare professional]
- Training provided in separate session for healthcare team on forms completion prior to offering genetic tests to patients

Hereditary Cancer Syndrome

Sample handling

Blood Specimen

- Storage at 2-8 deg Celsius.
- Do not freeze
- Do not shake tube of blood specimen
- Shipment at room temperature for 2 day delivery
- Kit will be provided
- For transfusion patients: Wait at least two weeks after a packed cell or platelet transfusion and at least four weeks after a whole blood transfusion prior to blood draw

Hereditary Cancer Syndrome

Sample handling

Oral Rinse

- Saliva collected in at least 30ml of mouthwash
- Kit will be provided